

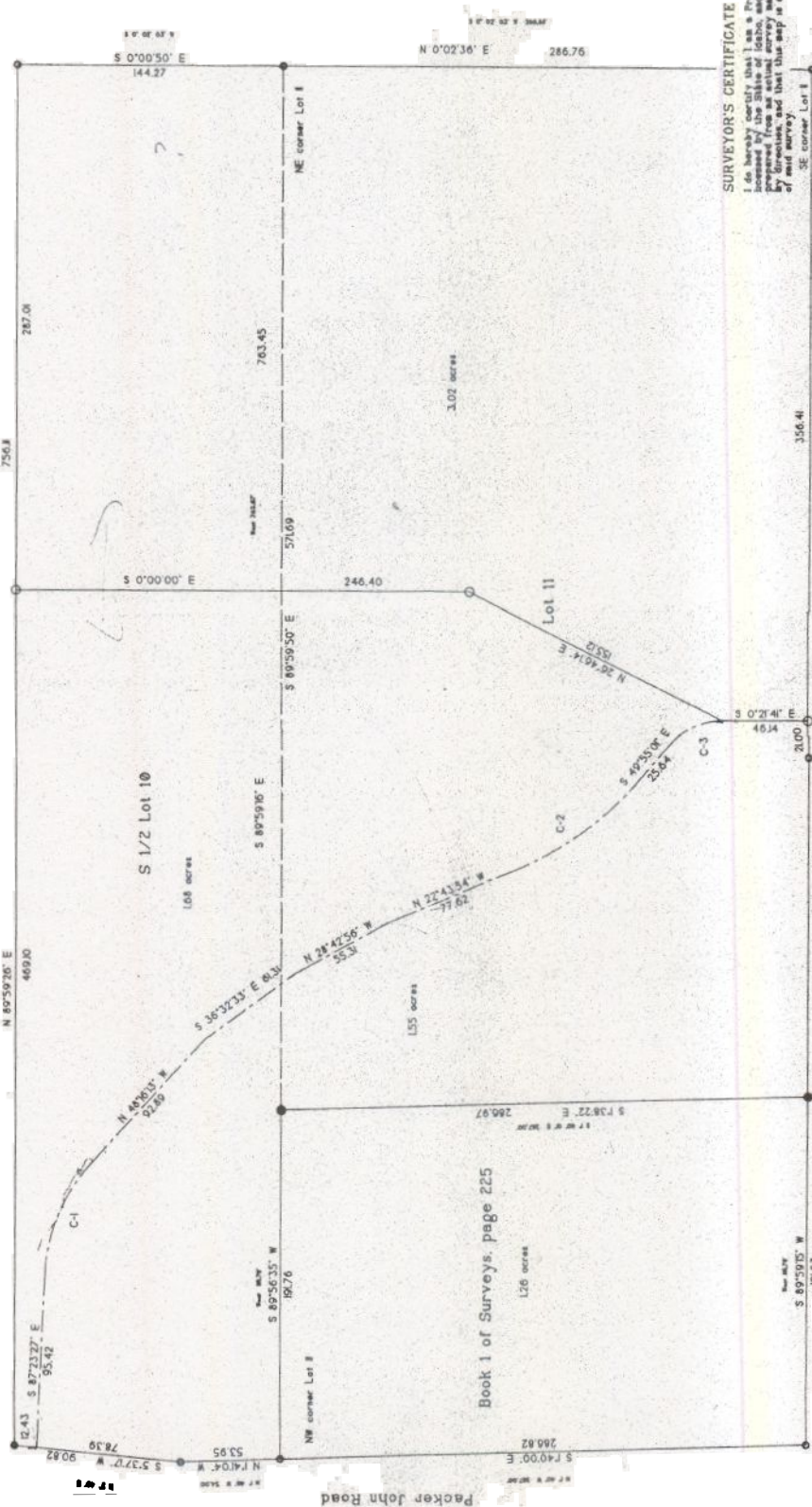
RECORD OF SURVEY

For Opal N. Hayes

S 1/2 of Lot 10 and Lot 11, Block 1

Smith's Ferry Subdivision No. 2, Located in Section 14, T. 11 N. R. 3 E. B.M. Valley County, Idaho

Scale 1 inch = 40 feet



Book 1 of Surveys, page 225

SURVEYOR'S CERTIFICATE
 I do hereby certify that this is a true and correct copy of the original and that the same has been prepared from an actual survey made on the ground under my supervision, and that this map is an accurate representation of said survey.
 Robert W. Freeman, P.L.S. 9688



LOT	CURVE	RADIUS	LENGTH	TANGENT	CHORD	BEARING	DELTA
01-188882	C-1	57.07	68.83	34.41	95.50	N 89°43'31"	37°07'08"
02-188882	C-2	12.27	12.27	11.85	16.10	N 89°59'30"	2°11'52"
03-188882	C-3	38.26	41.12	21.31	31.07	N 89°59'34"	2°03'23"

Legend

- Found 1/2 inch rubber
- Found 5/8 inch rubber
- Set 5/8 inch rubber
- I Date of Record